




---

---

---

---

---

---

---

---

### Makeup of Boundary

**3,146 miles of Land Boundary**  
**2,379 miles of Water Boundary**  
**5,525 miles Total**

- **5,554 Land Boundary Monuments**
- **2,526 Reference Monuments and 54 Range Marks used to reference 5,928 Turning Points (water boundary)**

\* A number of monuments have been added since these numbers were tabulated

---

---

---

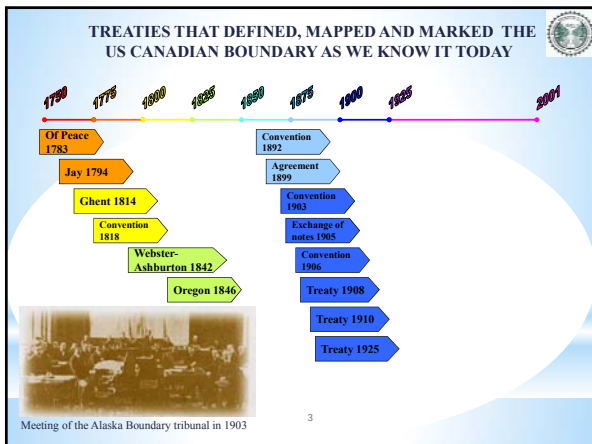
---

---

---

---

---




---

---

---

---

---

---

---

---



---

---

---

---

---

---

---

---

| Commissioners for Canada |           |
|--------------------------|-----------|
| William F. King          | 1904-1916 |
| James J. McArthur        | 1917-1924 |
| John D. Craig            | 1925-1931 |
| Noel J. Ogilvie          | 1931-1947 |
| James M. Wardle          | 1947-1950 |
| J. Leslie Rannie         | 1950-1951 |
| J. Earl R. Ross          | 1951-1957 |
| A. Frederick Lambert     | 1957-1976 |
| Alexander C. McEwen      | 1976-     |

| Commissioners for the United States |           |
|-------------------------------------|-----------|
| Otto H. Tittmann                    | 1904-1915 |
| Edward C. Barnard                   | 1915-1921 |
| F. Lester Jones                     | 1921-1929 |
| James H. Van Wagenen                | 1929-1935 |
| Thomas Riggs                        | 1935-1945 |
| John A. Ulinski                     | 1945-1953 |
| Samuel L. Golan                     | 1953-1961 |
| Edward J. King                      | 1961-1969 |
| Richard L. Herman                   | 1969-1977 |
| William M. Schreiber                | 1977-     |

---

---

---

---

---

---

---

---



MOUNT NATAZHAT 13,435 feet HIGHEST MOUNTAIN CLIMBED IN CONNECTION WITH 141<sup>ST</sup> BOUNDARY SURVEY BY CANADIAN SECTION

---

---

---

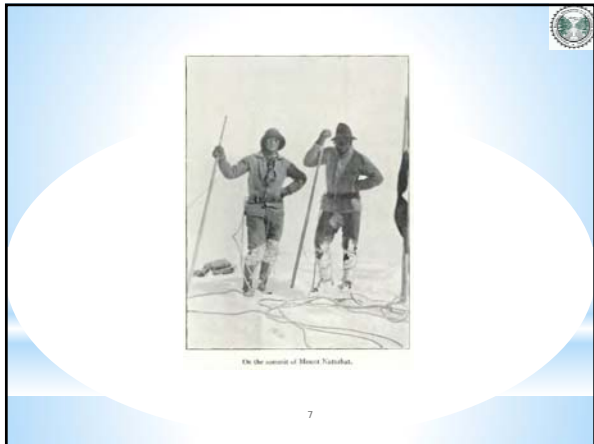
---

---

---

---

---



---

---

---

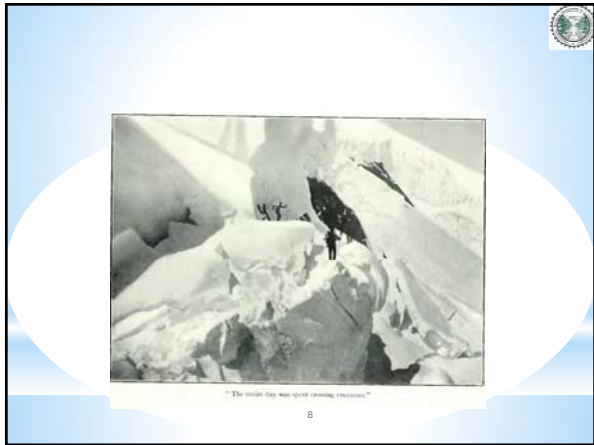
---

---

---

---

---



---

---

---

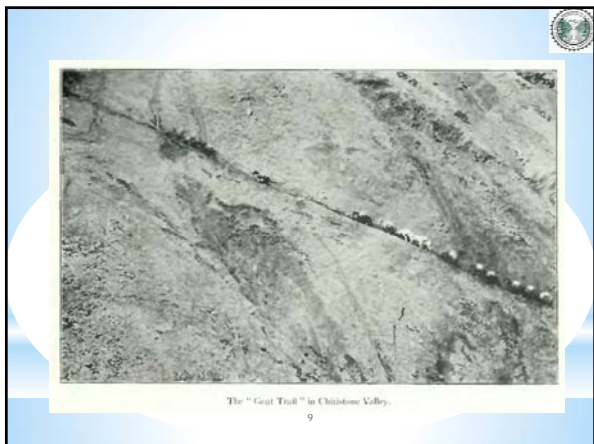
---

---

---

---

---



---

---

---

---

---

---

---

---




---

---

---

---

---

---

---

---

---

---




---

---

---

---

---

---

---

---

---

---




---

---

---

---

---

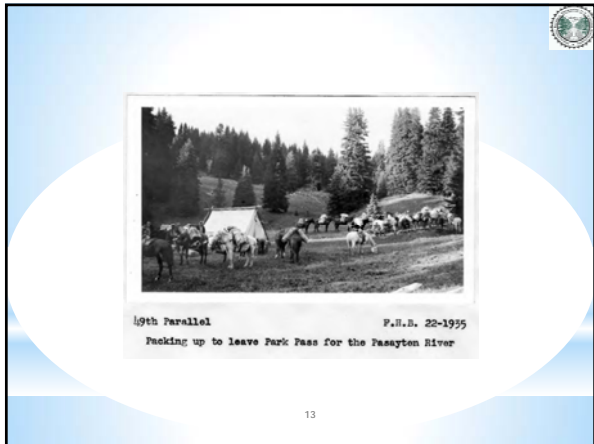
---

---

---

---

---




---

---

---

---

---

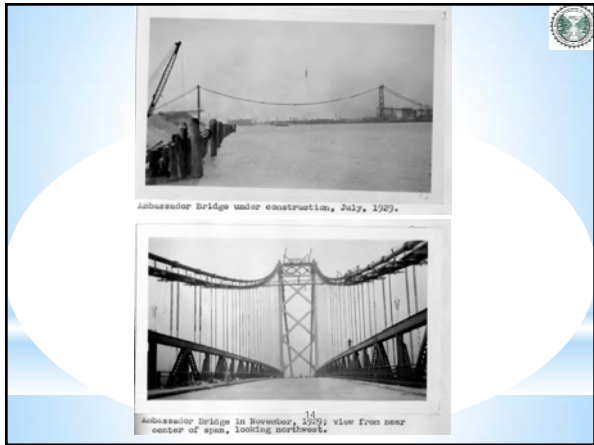
---

---

---

---

---




---

---

---

---

---

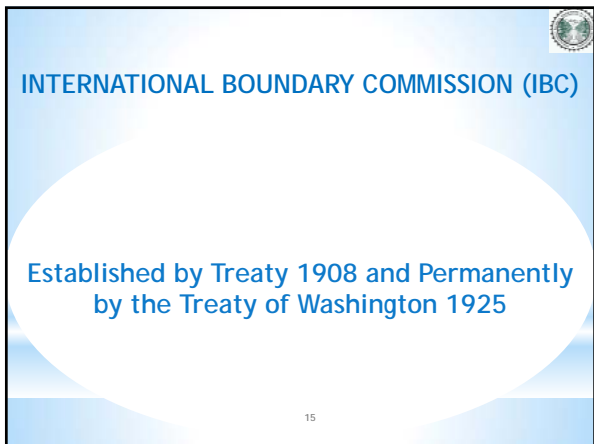
---

---

---

---

---




---

---

---

---

---

---

---

---

---

---

### Boundary Maintenance

- Inspecting the 5,525 mile Boundary
- Clearing 20 foot “vista” along the boundary through brush and forest.
- Maintaining, replacing or establishing additional boundary monuments

16

---

---

---

---

---

---

---

---

- Providing boundary specific information and technical data to the public and private sectors
- Regulating construction near or crossing the boundary
- Maintaining official records and maps

17

---

---

---

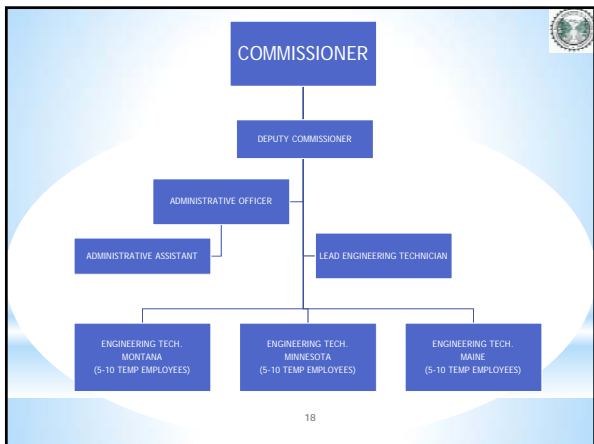
---

---

---

---

---



---

---

---

---

---

---

---

---




---

---

---

---

---

---

---

---

---

---

| SUB-SECTIONS                              | LENGTH OF SECTION IN |     | PREFERRED D CYCLE |
|---|----------------------|-----|-------------------|
|   | KM                   | MI  |                   |
| 1. Paranaqooty Bay                        | 40                   | 25  | 3                 |
| 2. St. Cross River System                 | 211                  | 130 | 8                 |
| 3. North Line & Min. Brook                | 126                  | 78  | 6                 |
| 4. St. John River                         | 115                  | 71  | 8                 |
| 5. St. Francis River                      | 70                   | 43  | 4                 |
| 6. Southwest & South Lines                | 136                  | 84  | 6                 |
| 7. S.W. Br. of St. John River             | 62                   | 38  | 8                 |
| 8. Highlands (N. E. Section)              | 284                  | 175 | 6                 |
| 9. Highlands (S.W. Section)               | 154                  | 95  | 6                 |
| 10. Halls Stream                          | 44                   | 27  | 4                 |
| 11. West Line (Dae.-N.Y.)                 | 146                  | 90  | 6                 |
| 12. West Line (Dae.-N.Y.)                 | 165                  | 102 | 6                 |
| 13. St. Lawrence River                    | 194                  | 120 | 8                 |
| 14. Lake Ontario and Niagara River        | 338                  | 210 | 8                 |
| 15. Lake Erie St. Clair and Detroit River | 545                  | 338 | 8                 |
| 16. Lake Huron and St. Mary's River       | 537                  | 333 | 8                 |
| 17. Lake Superior to Rainy River          | 467                  | 290 | 8                 |
| 18. Rainy River and Lake of the Woods     | 220                  | 136 | 8                 |
| 19. 49th (Bar. - Hills)                   | 196                  | 121 | 5                 |
| 20. 49th (Pemb. & Tur. Mts.)              | 76                   | 47  | 5                 |
| 21. 49th (Prairie)                        | 889                  | 549 | 5                 |
| 22. 49th (Great Falls to West Koot)       | 201                  | 124 | 8                 |
| 23. 49th (N. Koot. to Siml.)              | 233                  | 144 | 8                 |
| 24. 49th (Siml. to Columbia V.)           | 170                  | 105 | 8                 |
| 25. 49th (Fraser V.)                      | 55                   | 34  | 3                 |
| 26. Straits of Georgia and Juan de Fuca   | 241                  | 149 | 8                 |
| 27. S. E. Alaska                          | 1147                 | 708 | 10                |
| 28. 141° Meridian                         | 1050                 | 648 | 15                |

**BOUNDARY MAINTENANCE CYCLES**

---

---

---

---

---

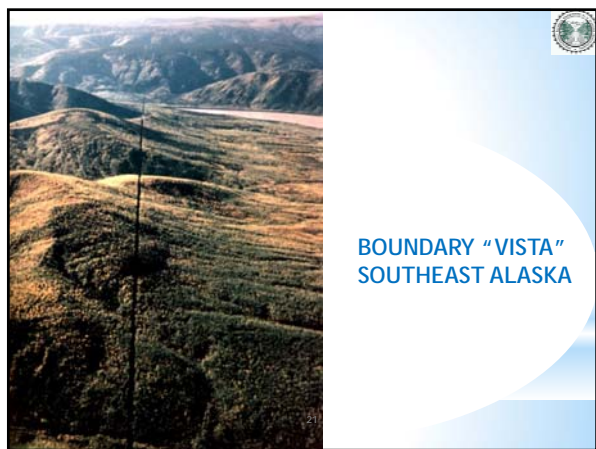
---

---

---

---

---




---

---

---

---

---

---

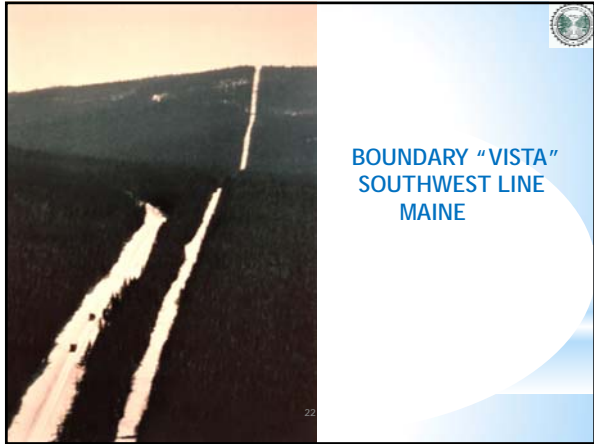
---

---

---

---





---

---

---

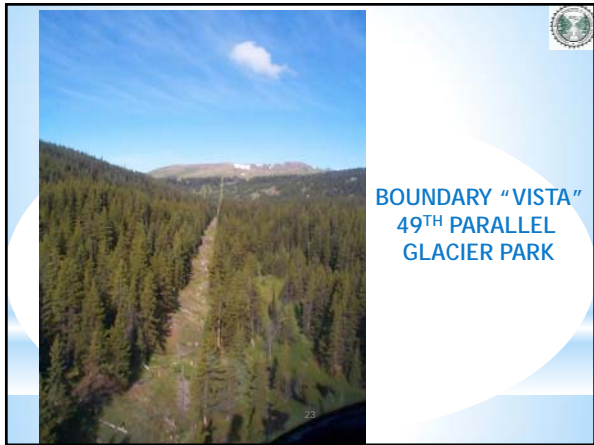
---

---

---

---

---



---

---

---

---

---

---

---

---



---

---

---

---

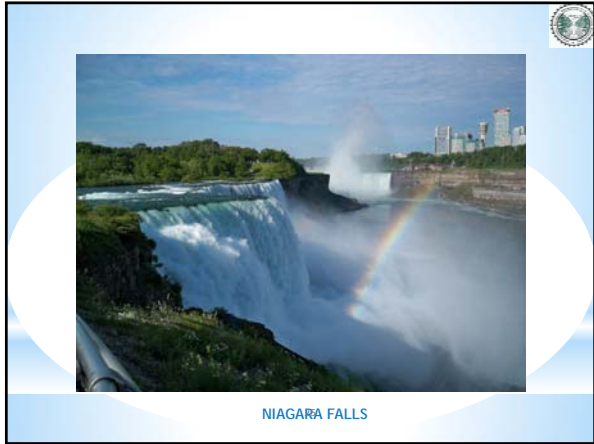
---

---

---

---





---

---

---

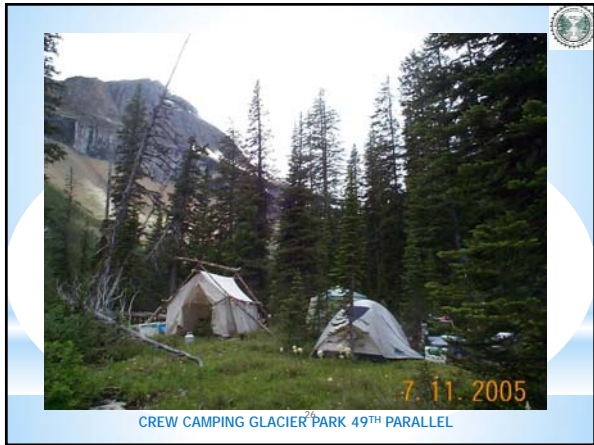
---

---

---

---

---



---

---

---

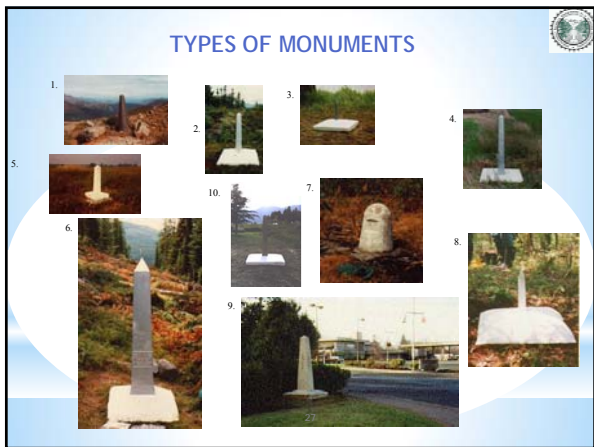
---

---

---

---

---



---

---

---

---

---

---

---

---



28  
MONUMENT AS RECOVERED 49<sup>TH</sup> PARALLEL MONTANA

---

---

---

---

---

---

---

---



29  
MONUMENT AFTER REPAIR 49<sup>TH</sup> PARALLEL MONTANA

---

---

---

---

---

---

---

---



30  
MONUMENT 49<sup>TH</sup> PARALLEL IN THE CASCADES

---

---

---

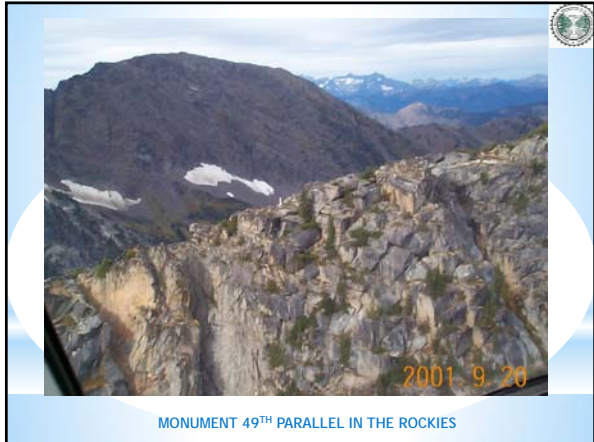
---

---

---

---

---



MONUMENT 49<sup>TH</sup> PARALLEL IN THE ROCKIES

---

---

---

---

---

---

---

---



ON THE ANGLE IN MINNESOTA

---

---

---

---

---

---

---

---



---

---

---

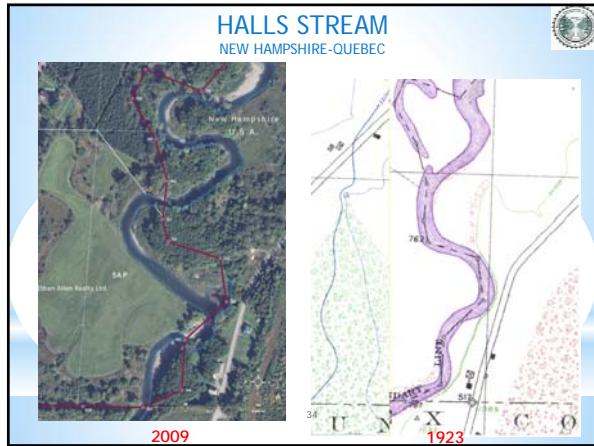
---

---

---

---

---



---

---

---

---

---

---

---

---